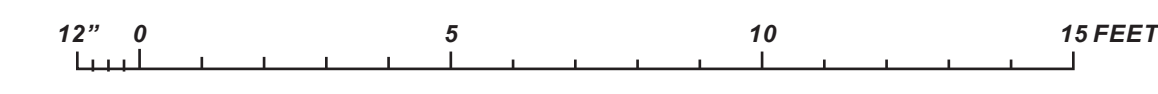
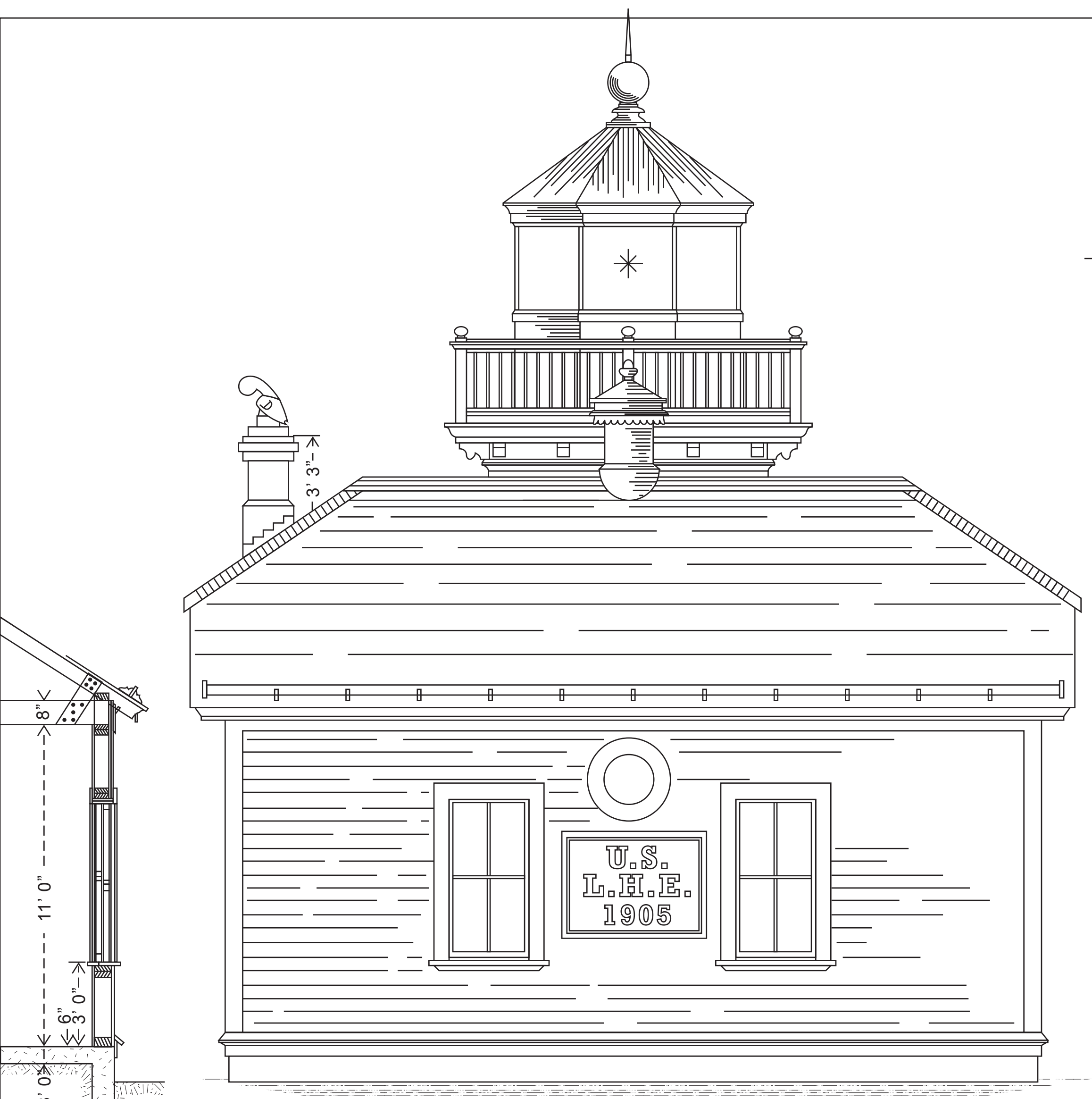


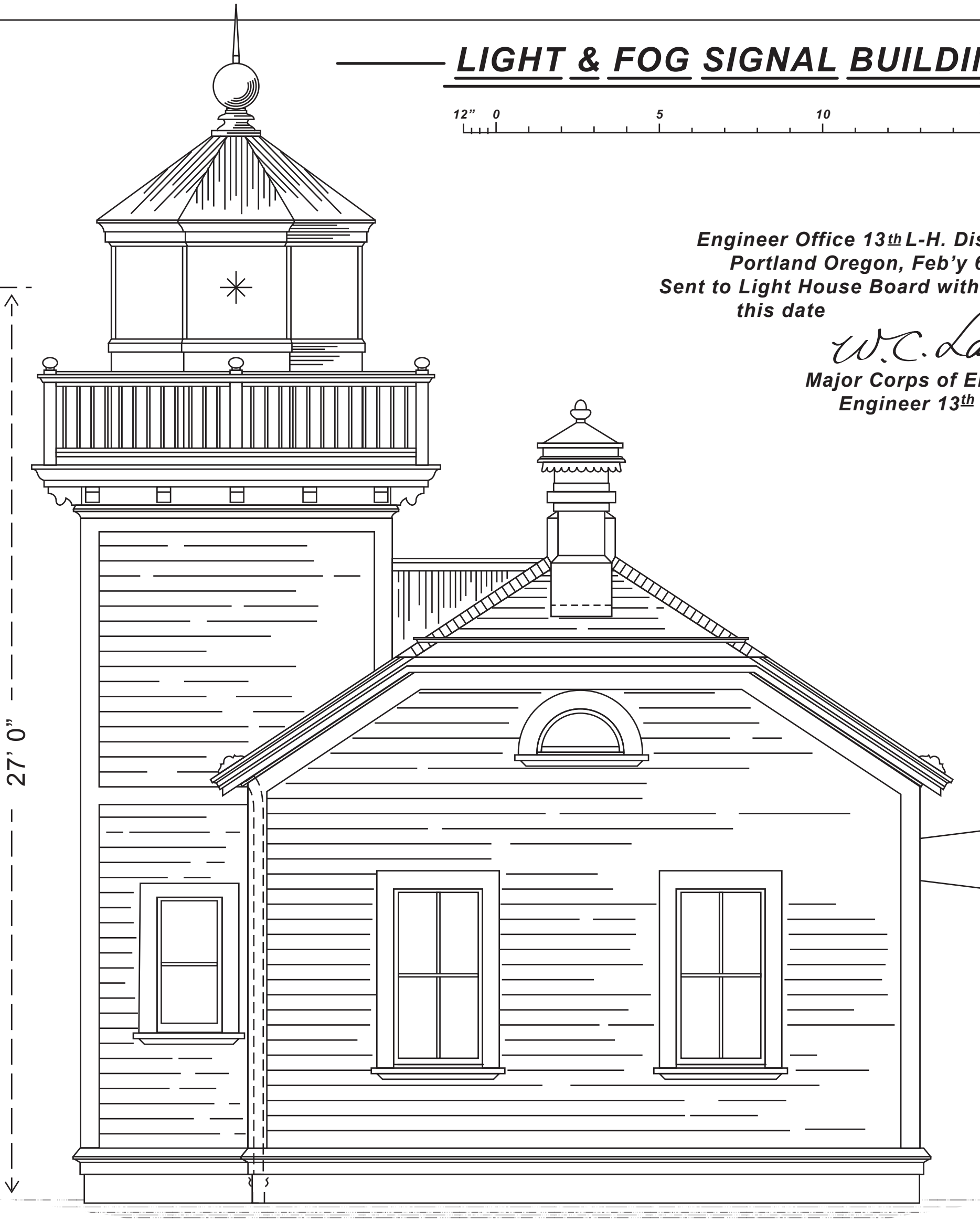
LIGHT & FOG SIGNAL BUILDING



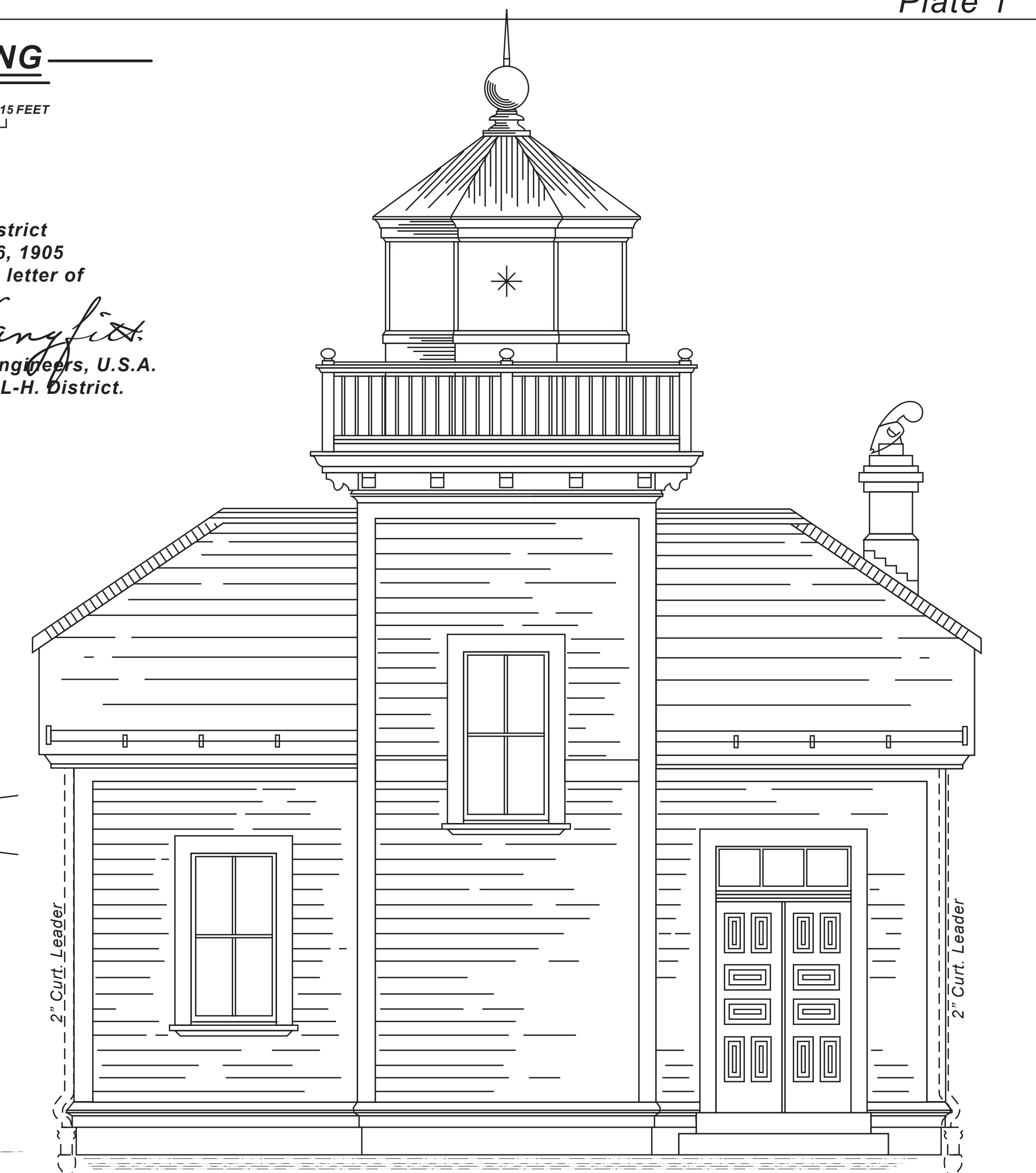
Engineer Office 13th L-H. District
Portland Oregon, Feb'y 6, 1905
Sent to Light House Board with letter of
this date
W.C. Langford
Major Corps of Engineers, U.S.A.
Engineer 13th L-H. District.



WEST ELEVATION

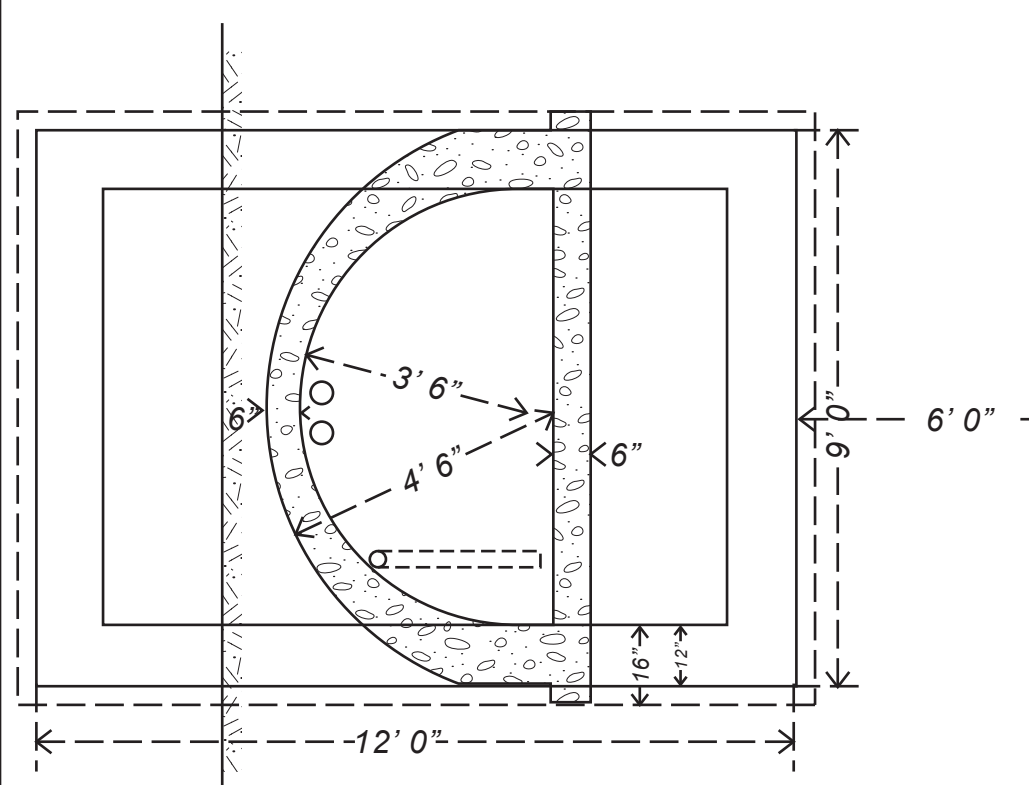


NORTH ELEVATION

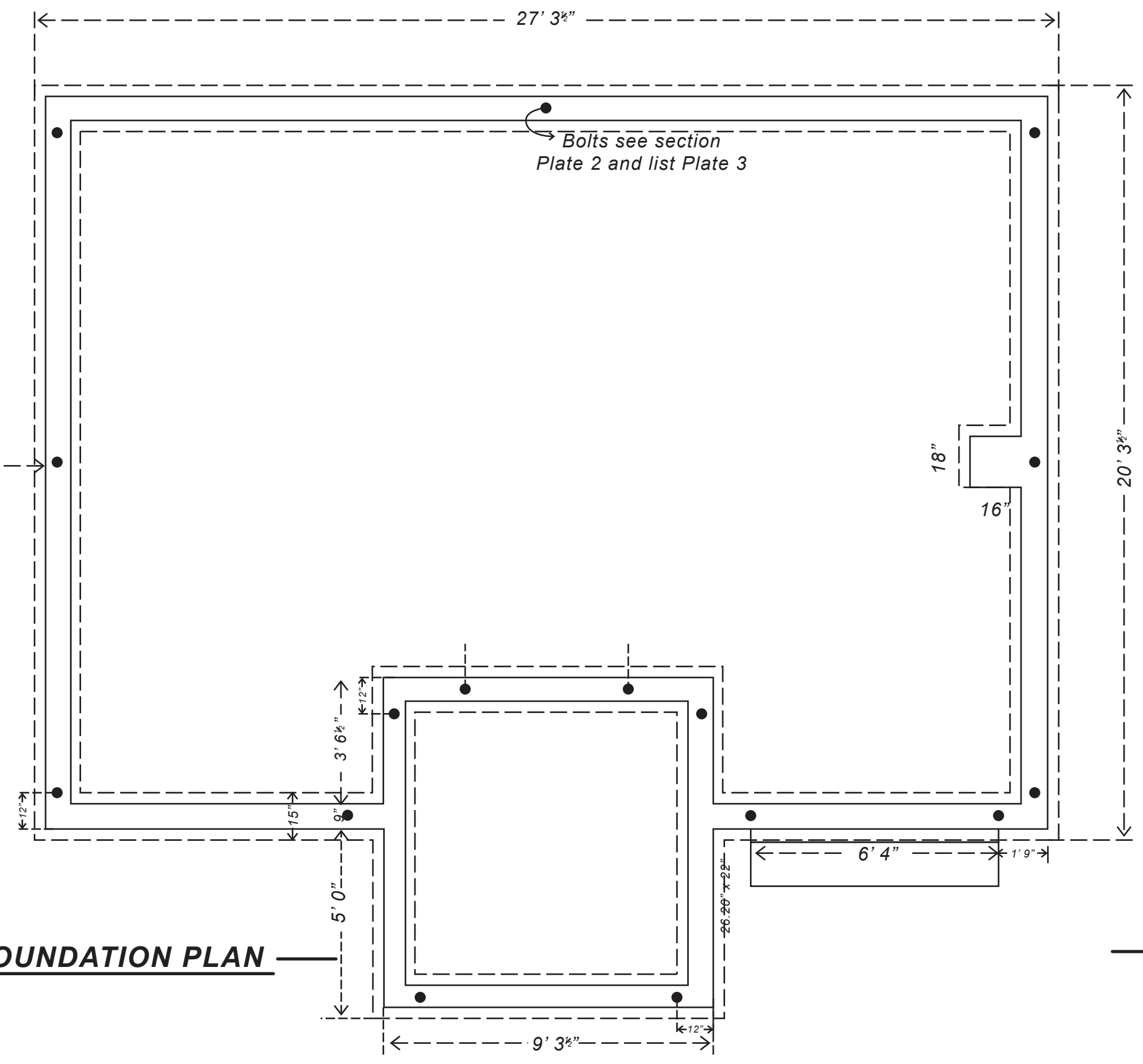


EAST ELEVATION

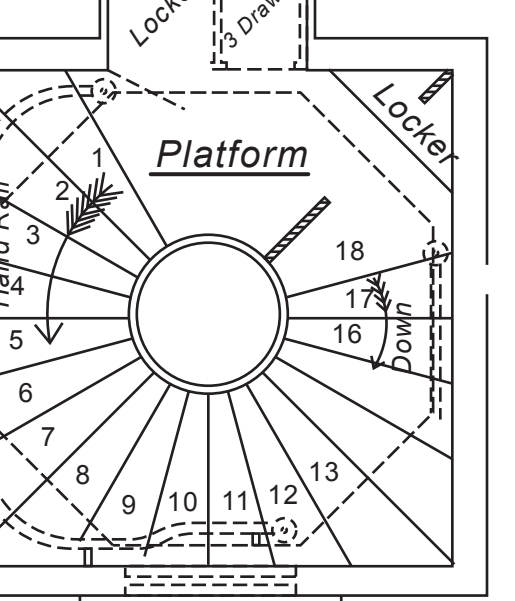
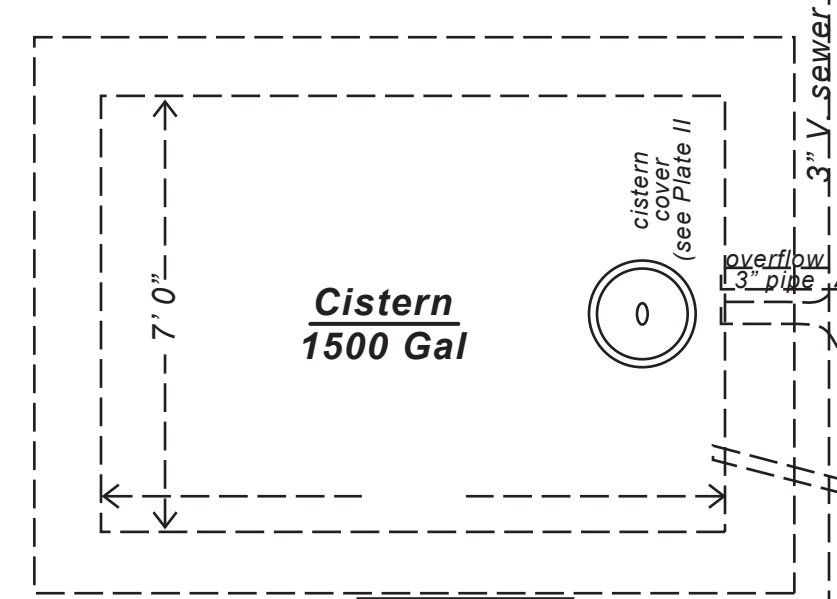
SECTION.



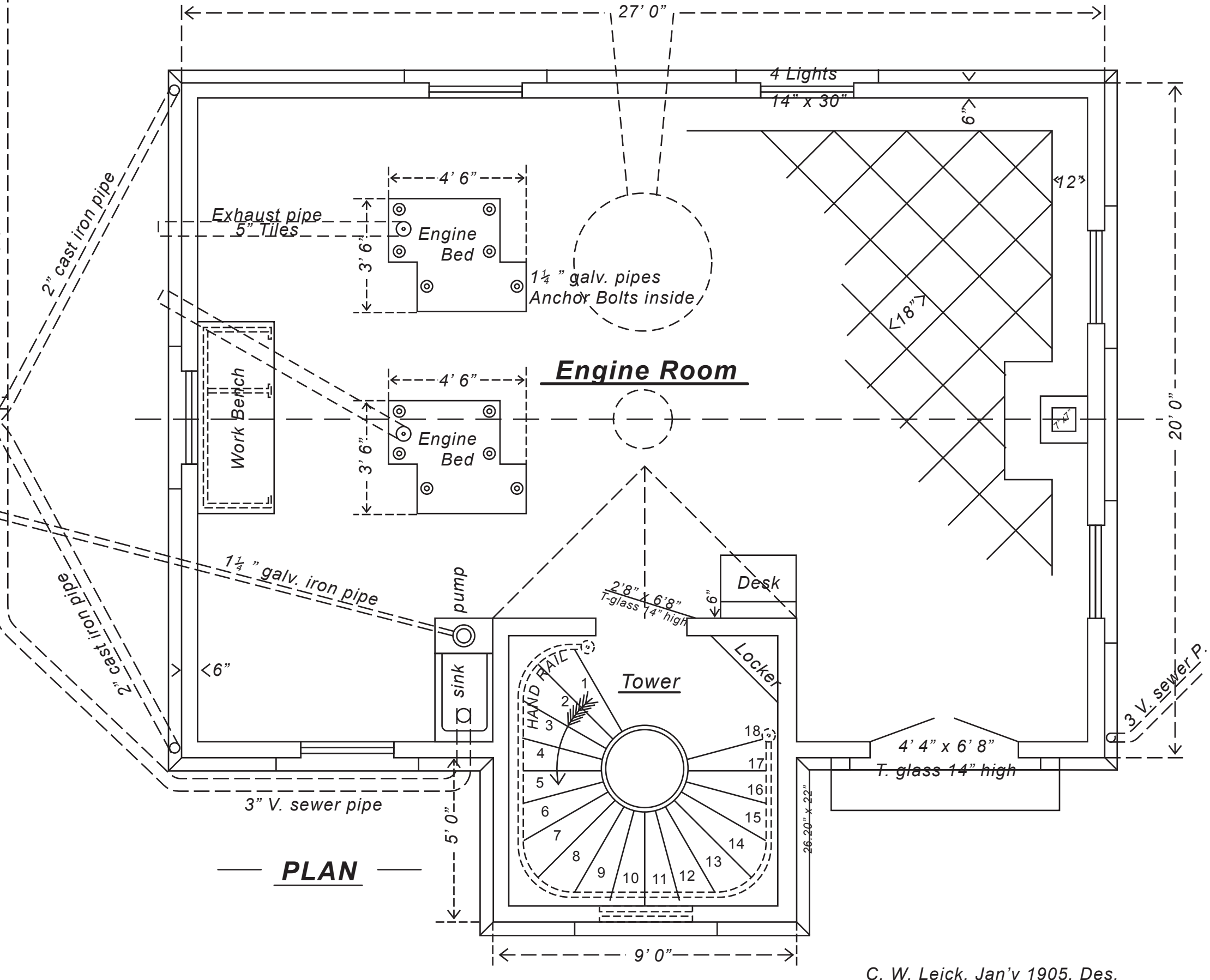
PLAN AND SECTION OF CISTERN



FOUNDATION PLAN



LANDING



PLAN

C. W. Leick, Jan'y 1905. Des.